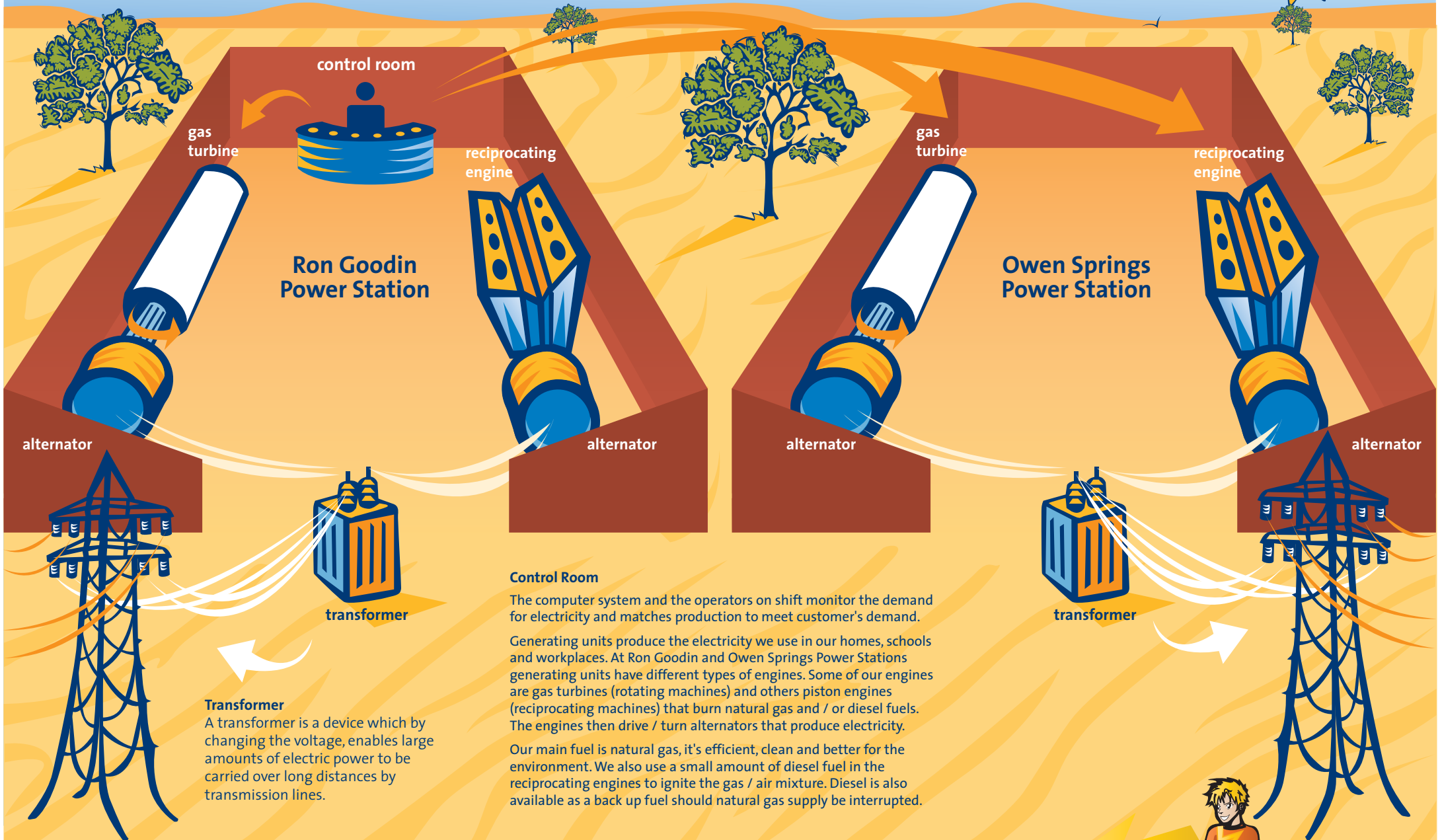


RON GOODIN AND OWEN SPRINGS POWER STATIONS



Ron Goodin Power Station

Owen Springs Power Station

Control Room

The computer system and the operators on shift monitor the demand for electricity and matches production to meet customer's demand.

Generating units produce the electricity we use in our homes, schools and workplaces. At Ron Goodin and Owen Springs Power Stations generating units have different types of engines. Some of our engines are gas turbines (rotating machines) and others piston engines (reciprocating machines) that burn natural gas and / or diesel fuels. The engines then drive / turn alternators that produce electricity.

Our main fuel is natural gas, it's efficient, clean and better for the environment. We also use a small amount of diesel fuel in the reciprocating engines to ignite the gas / air mixture. Diesel is also available as a back up fuel should natural gas supply be interrupted.

Transformer
A transformer is a device which by changing the voltage, enables large amounts of electric power to be carried over long distances by transmission lines.

