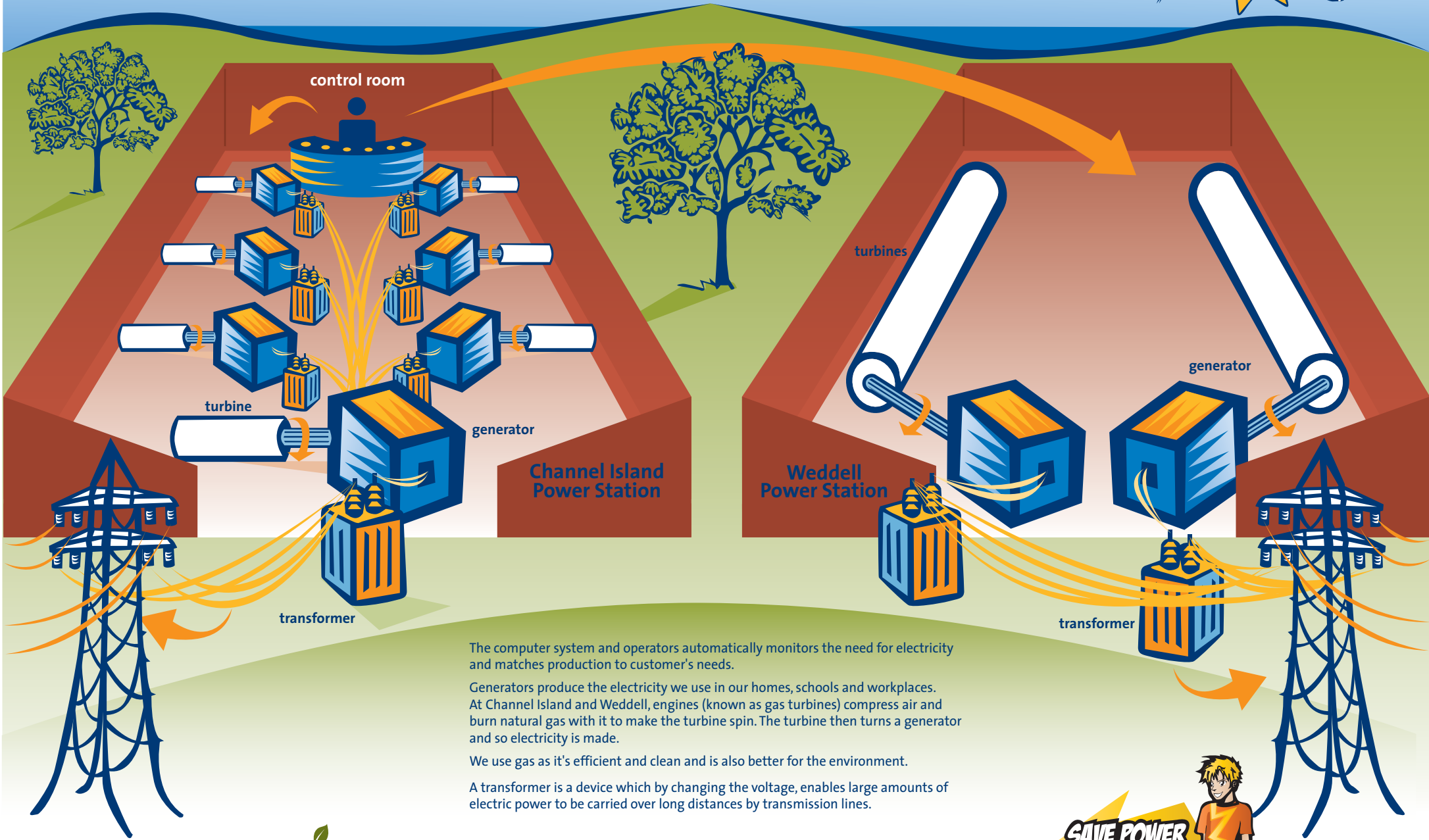
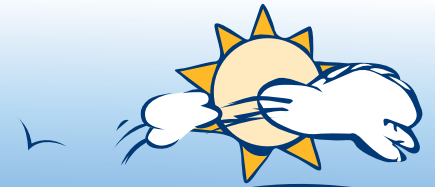


# CHANNEL ISLAND AND WEDDELL POWER STATIONS



The computer system and operators automatically monitors the need for electricity and matches production to customer's needs.

Generators produce the electricity we use in our homes, schools and workplaces. At Channel Island and Weddell, engines (known as gas turbines) compress air and burn natural gas with it to make the turbine spin. The turbine then turns a generator and so electricity is made.

We use gas as it's efficient and clean and is also better for the environment.

A transformer is a device which by changing the voltage, enables large amounts of electric power to be carried over long distances by transmission lines.

