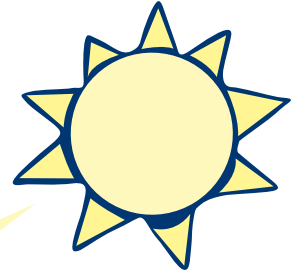
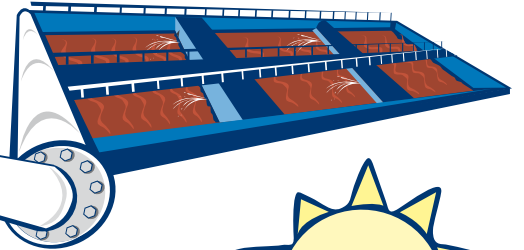


# WASTEWATER CYCLE DISCHARGE TO WATERWAYS



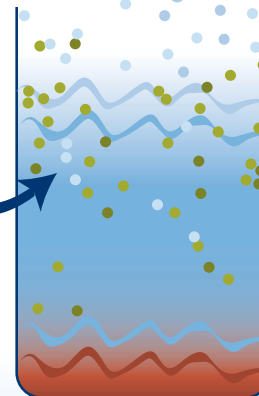
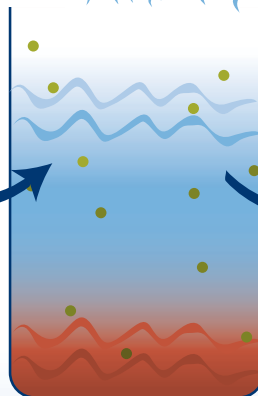
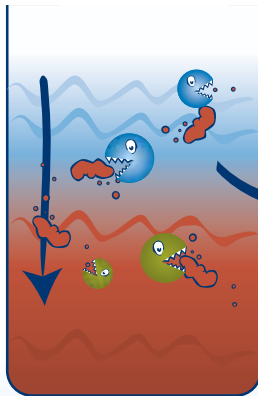
House wastewater pipes

Liquid waste entering the wastewater treatment ponds



Solids settling out

Bacteria eat solids (organics)



Sunlight kill bacteria. The treatment process adds oxygen to the wastewater.

Cycle duration (about 30 days)

Fish need plenty of oxygen in the water to live



Treated wastewater with plenty of oxygen flows to the waterways

